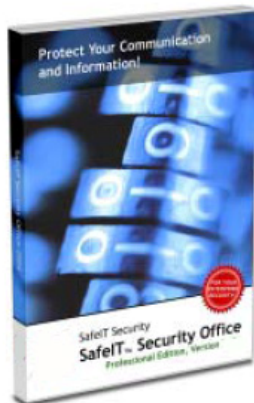


# ARDY



## SafelT Security Office

Recent public exposure of FBI's "Carnivore" e-mail snooping program and the global digital surveillance system Echelon has highlighted what has been known for a long time- everything you transmit by e-mail can be intercepted and used by others. External industrial espionage, hacker attacks or internal information theft- all are urgent threats that you need to protect yourself against.

The award-winning SafelT Security Office is the leading program suite for user-friendly secure e-mail communication, prevention of unauthorized access to restricted documents and complete removal of selected stored information.

### Key Features

The encryption technology used in this product suite for your complete protection supports several encryption algorithms, including the new AES-standard, and key lengths 256-480 bits. All four programs included are easy to install and administrate as one user-friendly software.

#### SafelT E-mail Encryption

Automatic establishment of secure e-mail communication between SafelT users. Continue to use your normal e-mail client. All e-mails sent, including attached information, will be encrypted before leaving your computer. SafelT E-mail Encryption guarantees point-to-point secure communication. At no time in transit can your information be accessed or modified:

#### SafelT Express

Easily send password encrypted secure e-mails to counterparts that are not using SafelT, including web-mail users.

#### SafelT File Encryption

Encrypt your files and folders on your computer to prevent unauthorized access. Choose self extracting file format if you wish to send encrypted file by other media to any recipient.

#### SafelT File Shredding

Remove your private and confidential files completely, to prevent restoring of sensitive information.

Sweden NT Awards  
NT 2001



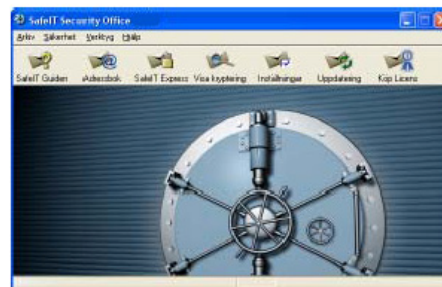
### Technical Specifications

#### System Requirements

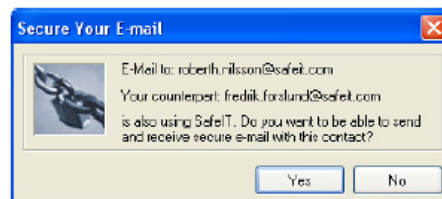
- SafelT is optimized for all Windows platforms.
- An e-mail program and an e-mail address supporting the SMTP/POP3-protocols (e.g. Microsoft Outlook, Outlook Express, Netscape, Eudora, Opera).

#### Security Technology

- Symmetric encryption algorithms:
  - New AES-standard Rijndael (256 bits),
  - Blowfish (448 bits), Twofish (256 bits),
  - SafelT-algorithm (480 bits).
- Asymmetric encryption algorithm:
  - Diffie-Hellman Key Exchange Protocol.
- Hash-algorithm: MD5
- PRNG: Isaac
- Automatic random key generation and constant exchange of encryption keys.
- Unique encryption keys used for each e-mail sent.



- The main program from where you can access all functions in the program.



- The program automatically detects contacts that are using the SafelT program.